

# CORE TEAM

Management+  
Producing Team

- Have you considered the impact the themes of your work may have on your team?
- Have you explored options for supervision & support?

Governance+  
Steering Group

- Are there frameworks in place to support Safeguarding?
- Are there clear communication channels reflecting accountability & responsibilities?

Creative  
Leaders

- Is there support in place to allow appropriate processing of emotional labour?
- Have you considered power dynamics which may impact emotional honesty?

# QUESTIONS FOR SAFEGUARDING THE MAKING PROCESS -

offers a series of prompts – to help you to consider your options for supporting and safeguarding your partner organisations, collaborators and the core team involved in the making process.

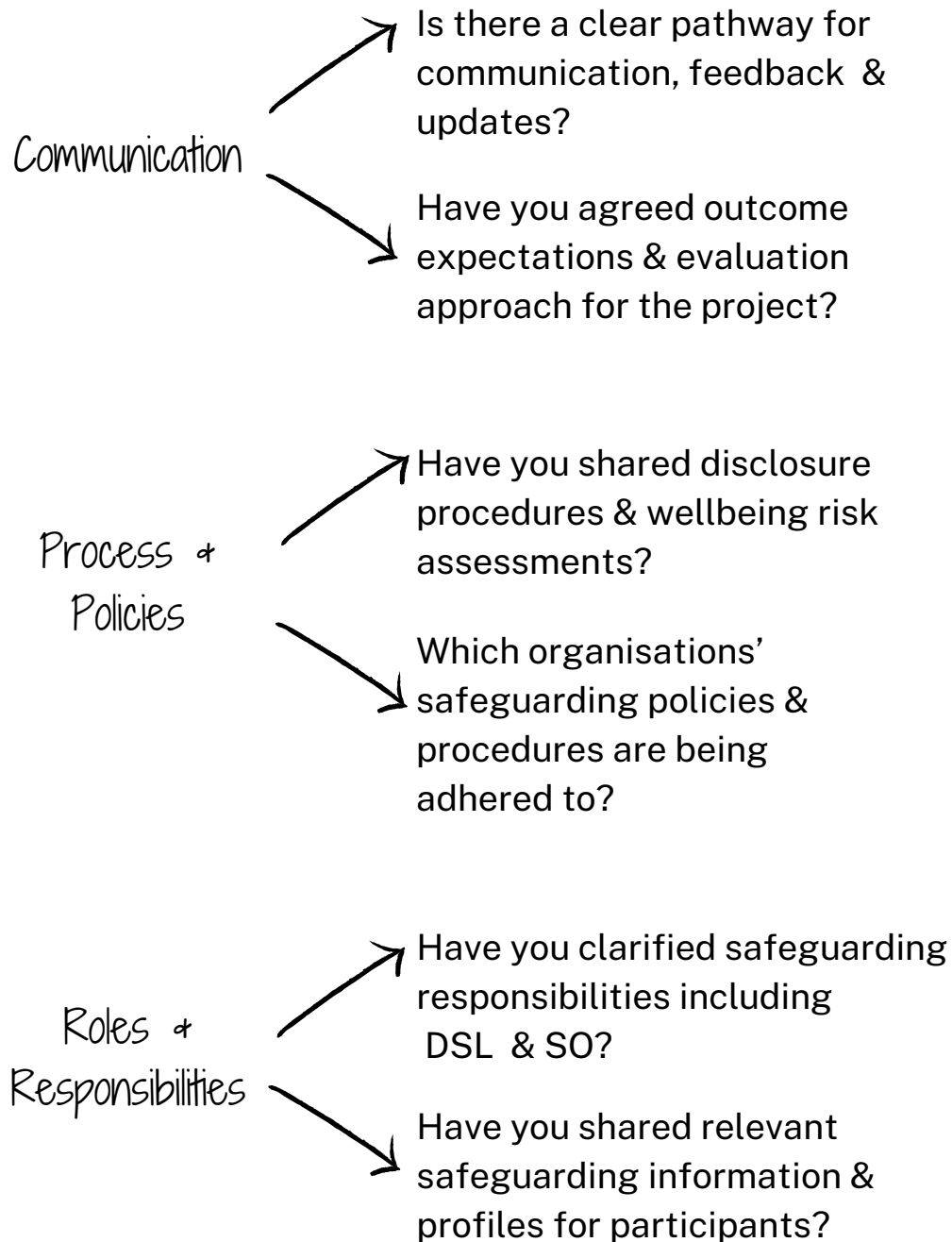
These questions emerged from reflective discussions between **Vincent Dance Theatre** and **Playing ON Theatre Company** whilst reviewing the complex parameters that interplay when co-producing work with vulnerable communities and younger participants.

Some questions may not be relevant to your organisation and some considerations may be new to you. The aim is to encourage reflective discussion with your team as you develop your safeguarding and wellbeing provision for everyone involved.

Phase Two (spring 2023) will develop a micro-site of Safeguarding Resources, to share examples of Safeguarding Policies, Procedures and Case Studies that demonstrate a protective mindset, from a range of arts organisations across the UK.

If you would be interested in contributing a case study, policy or examples of good practice to the resources please let us know by contacting [admin@vincentdt.com](mailto:admin@vincentdt.com).

# PARTNER ORGANISATIONS



# COLLABORATORS

